


# MIL "ON" DTC P1423 or Fuel Cap Binding

**Service Category** Engine/Hybrid System

**Section** Fuel System

**Market** USA

Lexus Supports  
ASE Certification 

## Applicability

YEAR(S)	MODEL(S)	ADDITIONAL INFORMATION
2010 – 2011	RX450H	

## Introduction

Some 2010 – 2011 model year RX 450h vehicles may exhibit a MIL "ON" condition with Diagnostic Trouble Code (DTC) P1423, or a fuel cap binding upon installation or removal. Use the following repair procedure to diagnose and address this condition.

## Production Change Information

This TSIB applies to vehicles produced **BEFORE** the Production Change Effective VINs shown below.

MODEL	DRIVETRAIN	PLANT	PRODUCTION CHANGE EFFECTIVE VIN
RX 450h	2WD	Kyushu Line 1	JTJZB1BA#B2004976
	AWD		JTJBC1BA#B2037213
	2WD	Kyushu Line 2	JTJZB1BA#B2404228
	AWD		JTJBC1BA#B2416596

## Warranty Information

OP CODE	DESCRIPTION	TIME	OFP	T1	T2
EG1018	R & R Fuel Cap Assembly	0.4	77300-48010	8A	57

### APPLICABLE WARRANTY

- This repair is covered under the Lexus Federal Emission Warranty. This warranty is in effect for 48 months or 50,000 miles, whichever occurs first, from the vehicle's in-service date.
- Warranty application is limited to occurrence of the specified condition described in this bulletin.

## MIL "ON" DTC P1423 or Fuel Cap Binding

### Parts Information

PREVIOUS PART NUMBER	CURRENT PART NUMBER	PART NAME	QTY
77300-48010	Same	Cap Assembly, Fuel Tank w/Tether	1
77300-50030	Same		1

### Required Tools & Equipment

REQUIRED EQUIPMENT	SUPPLIER	PART NUMBER	QTY
TIS Techstream* or Techstream Lite  NOTE: Software version 5.10.029 or later is required.	ADE	TSPKG1 or TSLITEDLR01	1

\* Essential SST.

#### NOTE

Additional Techstream units may be ordered by calling Approved Dealer Equipment (ADE) at 1-800-368-6787.

### Repair Procedure

1. Using TIS Techstream, check for stored DTCs.
2. Verify DTC P1423 is present.

#### NOTE

If there are any codes present other than P1423, this TSIB does NOT apply. Refer to the appropriate Repair Manual for diagnosis.

3. Check the fuel cap condition.

Does the fuel cap bind while installing or removing?

- **YES** — Continue to step 4.
- **NO** — Refer to the Technical Information System (TIS), applicable model year RX 450h Repair Manual:

2010 ([to 08/2009](#)) / ([from 08/2009](#)) / [2011](#) RX 450h:  
Engine/Hybrid System – Engine Control – “2GR-FXE Engine Control System: SFI System:  
P1422, P1423: Fuel Tank Small Leak”

#### NOTE

While installing the cap use light pressure and only turn until the fuel cap clicks one time.

## MIL "ON" DTC P1423 or Fuel Cap Binding

---

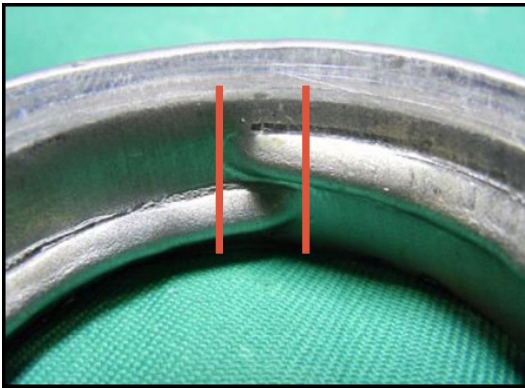
### Repair Procedure (Continued)

4. Inspect the fuel neck for overlapping threads (see Figures 1 and 2).

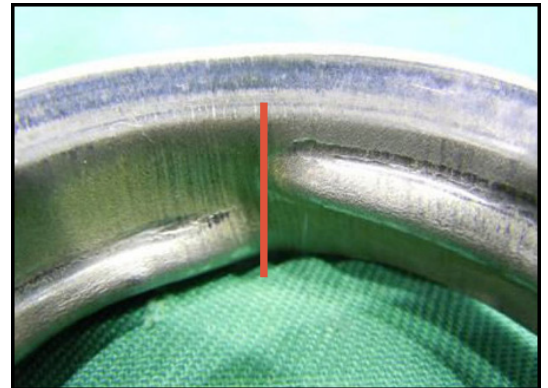
Are threads overlapping as shown in Figure 1?

- **YES** — Replace fuel cap with part number 77300-50030 and go to step 5.
- **NO** — Replace fuel cap with part number 77300-48010 and go to step 5.

**Figure 1. Overlapping Threads**



**Figure 2. Threads Not Overlapping**



5. After the repair is complete, perform the Automatic EVAP System Check again to confirm there are NO pending DTC(s) and the system is normal.

**NOTE**

Ensure the fuel cap door is closed when performing the Automatic EVAP System Check, or the vehicle will incorrectly determine that the Fuel Vapor-Containment Valve is stuck open.